



Kilkenny County Council
Comhairle Chontae Chill Chainnigh

Kilkenny

Draft National Waste Management Plan

For A Circular Economy

Plenary Presentation 15th

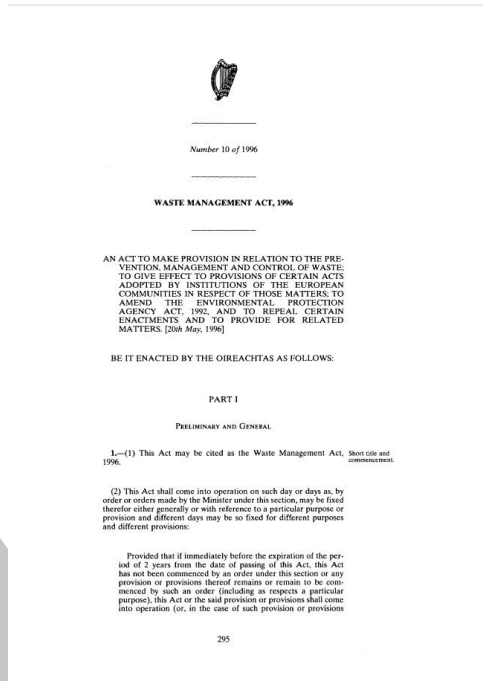


where medieval meets modern

Agenda

1. Backdrop / Context
2. Drafting Process
3. Plan
 - Volumes
 - Ambition
 - Targets
 - Core Policies
 - Focus Areas & Groups
 - Priority Actions
 - Key Deliverables
4. Next Steps
 - Consultation & Submissions
 - Making Plan
5. Alignment with Climate Change
6. Useful Links

1 Context – Evolving Policy



1996



2012



2013



2015

1 Context – Evolving Policy

Rialtas na hÉireann
Government of Ireland

A Waste Action Plan for a Circular Economy

Ireland's National Waste Policy
2020-2025

- Working with the Regional Waste Management Planning Offices and the City and County Management Association we will replace the existing Regional Waste Management Plans with a National Waste Management Plan for a Circular Economy containing targets for:
 - Reuse
 - Repair
 - Resource consumption
 - Reducing contamination levels

2020

Rialtas na hÉireann
Government of Ireland

Whole of Government Circular Economy Strategy 2022 - 2023

Living More, Using Less

Prepared by the Department of the Environment, Climate and Communications
gov.ie

2021

epa
Rialtas na hÉireann
Government of Ireland

THE CIRCULAR ECONOMY PROGRAMME 2021-2027

The Driving Force for Ireland's Move to a Circular Economy

2021

Rialtas na hÉireann
Government of Ireland

Number 26 of 2022

Circular Economy and Miscellaneous Provisions Act 2022

2022

1 Context – Evolving Policy



Rialtas na hÉireann
Government of Ireland

A Waste Action Plan for a Circular Economy

Ireland's National Waste Policy
2020-2025

- Working with the Regional Waste Management Planning Offices and the City and County Management Association we will replace the existing Regional Waste Management Plans with a National Waste Management Plan for a Circular Economy containing targets for:
 - Reuse
 - Repair
 - Resource consumption
 - Reducing contamination levels

2020

Rialtas Aitiúil Éireann
Local Government Ireland

DRAFT NATIONAL WASTE MANAGEMENT PLAN FOR A CIRCULAR ECONOMY

VOLUME I
CURRENT SITUATION AND CHALLENGES

REGIONAL WASTE MANAGEMENT PLANNING OFFICES

Rialtas Aitiúil Éireann
Local Government Ireland

DRAFT NATIONAL WASTE MANAGEMENT PLAN FOR A CIRCULAR ECONOMY

VOLUME II
POLICY RESPONSES AND ACTIONS

REGIONAL WASTE MANAGEMENT PLANNING OFFICES

Rialtas Aitiúil Éireann
Local Government Ireland

DRAFT NATIONAL WASTE MANAGEMENT PLAN FOR A CIRCULAR ECONOMY

VOLUME III
DELIVERY ROADMAP

REGIONAL WASTE MANAGEMENT PLANNING OFFICES

Rialtas Aitiúil Éireann
Local Government Ireland

DRAFT NATIONAL WASTE MANAGEMENT PLAN FOR A CIRCULAR ECONOMY

VOLUME IV
SUPPORTING DOCUMENTATION

REGIONAL WASTE MANAGEMENT PLANNING OFFICES

Rialtas Aitiúil Éireann
Local Government Ireland

DRAFT NATIONAL WASTE MANAGEMENT PLAN FOR A CIRCULAR ECONOMY

VOLUME V A
SEA ENVIRONMENTAL REPORT

REGIONAL WASTE MANAGEMENT PLANNING OFFICES

Rialtas Aitiúil Éireann
Local Government Ireland

DRAFT NATIONAL WASTE MANAGEMENT PLAN FOR A CIRCULAR ECONOMY

VOLUME V B
NATURA IMPACT STATEMENT (NIS)

REGIONAL WASTE MANAGEMENT PLANNING OFFICES

2023

1 Context - Major Changes

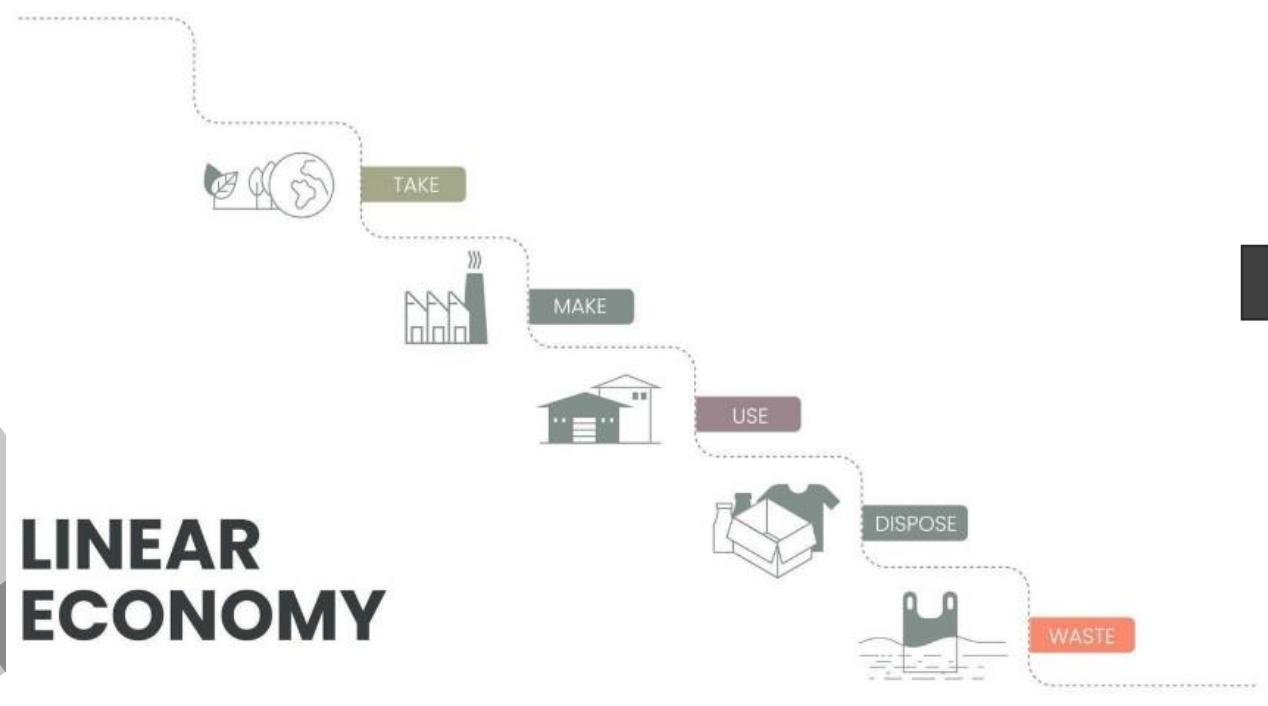
- **Single National Plan**
- **Circularity**
- **Collaboration**



**DRAFT NATIONAL WASTE
MANAGEMENT PLAN**
FOR A CIRCULAR ECONOMY



1 Context - Major Change – Transitioning from ... Linear to Circular Economy



2 Plan – GOVERNANCE & OVERSIGHT



Cumann Lucht Bainistíochta Contae agus Cathrach
County and City Management Association

National Oversight Group

2 PLAN – 5 VOLUMES

Executive Summary

VI

VII

VIII

IV

VV

**Current
Situation and
Challenges**

**Policy
Responses and
Actions**

**Delivery
Roadmap**

**Supporting
Documentation**

SEA/NIS

VI

**Current
situation and
Challenges**

**Rules
Landscape
Resources**

VII

**Policy
Responses and
Actions**

**Core Positions
Core Policies
Focus Areas**

VIII

**Delivery
Roadmap**

**Impact
Organisation
Implementation**

PLAN AMBITION



**TOTAL WASTE
GROWTH PER
PERSON**

By:

Maintaining

Waste management and behavioural advances

Accelerating

The transition to a circular economy

Influencing

Sustainable consumption

Improving

The capture of all resources

Optimising

Circularity

Enabling

Compliance with policy and legislation



TARGETS

1%
Reduction/
person/year

Target 1A Residual Municipal Waste

Waste destined for landfill or recovery by thermal treatment

2%
Reduction/year

Target 1B Construction Materials

Construction and Demolition Waste generated

90%
90% of material in
compliance

Target 2 Contamination of Materials

Contamination of recycling and food waste with other materials

10kg
Per person/year

Target 3A Reuse of Materials

Reuse of materials like clothes or furniture to prevent waste

10
Sites for
Reuse (min)

Target 3B Reuse Facilities

Provide for reuse at 10 Civic Amenity Sites, minimum

3
Collection
Schemes

Target 4 Repair of Materials

(Develop a roadmap for a Repair Target and Provide 1 collection scheme for repairable materials in each region and align with repair practitioners).
This target will also consider a roadmap for remanufacturing

1/20

my



CORE POLICIES

1 Protection of the Environment

2 Climate Action

3 Policy and Legislation

4 Collaboration

5 Changing Behaviours

6 Organisational Structures

7 Innovation

8 Monitoring

9 National Development Plan

10 Green Public Procurement

11 Data Quality

12 Nationally Important Infrastructure

13 Funding this Plan



FOCUS AREA GROUPS

OPERATIONAL

**MATERIAL
STREAMS**

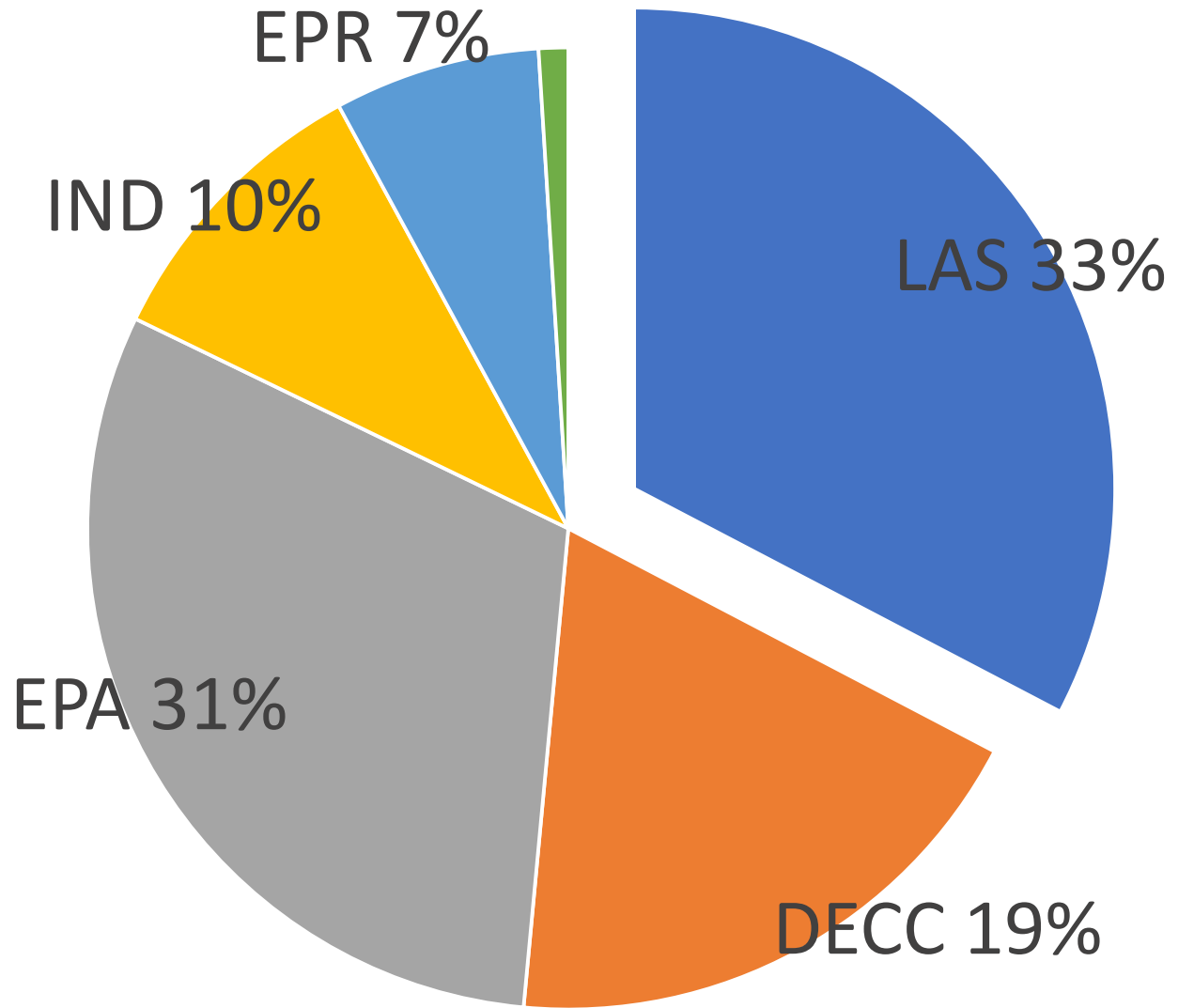
INFRASTRUCTURE

Focus Area Fact Sheets



FOCUS AREA 1	MUNICIPAL COMMERCIAL WASTE
Purpose	What is it?
Promote prevention and better segregation of commercial waste.	Municipal commercial waste is mixed waste which is similar in nature and composition to waste from households and includes food waste.
Targeted Policies	Priority Actions (Responsibility)
TP1.1	PA1.1 (LAS)
Identify and promote new means, methods and key drivers of sustainable consumption practices to reduce waste generation.	Develop and deliver targeted awareness campaigns and projects to improve behaviours on prevention, reuse and repair in non household settings.
TP1.2	PA1.2 (LAS)
Ensure that all non-household municipal waste settings adopt best practice on waste segregation and are serviced with a segregated waste collection system to maximise the quantity and quality of materials collected.	Enhance the capture of data from waste collectors for non-household settings through the National Waste Collection Permit Office.
TP1.3	PA1.3 (LAS/Ind.)
Strengthen the monitoring and accurate measurement of non-household municipal waste flows.	Investigate the potential for a sustainable waste management assurance scheme for business consistent with the transition to a circular economy.
TP1.4	PA1.4 (LAS)
Implement appropriate engagement and /or enforcement measures in response to non-compliances identified.	Engage with businesses through local authority structures to promote consistent practices with regard to the management of commercial waste using measures including the MyWaste.ie business tools.
TP1.5	PA1.5 (LAS)
Promote the consistent application of an appropriate incentivised charging system for non-household municipal waste, through awareness and enforcement.	Ensure the consistent and targeted application of waste storage and presentation bye-laws to improve participation and segregation practices and incorporate into the RMCEI process.

83
Priority
Actions



VI

**Current
situation and
Challenges**

**Rules
Landscape
Resources**

VII

**Policy
Responses and
Actions**

**Core Positions
Core Policies
Focus Areas**

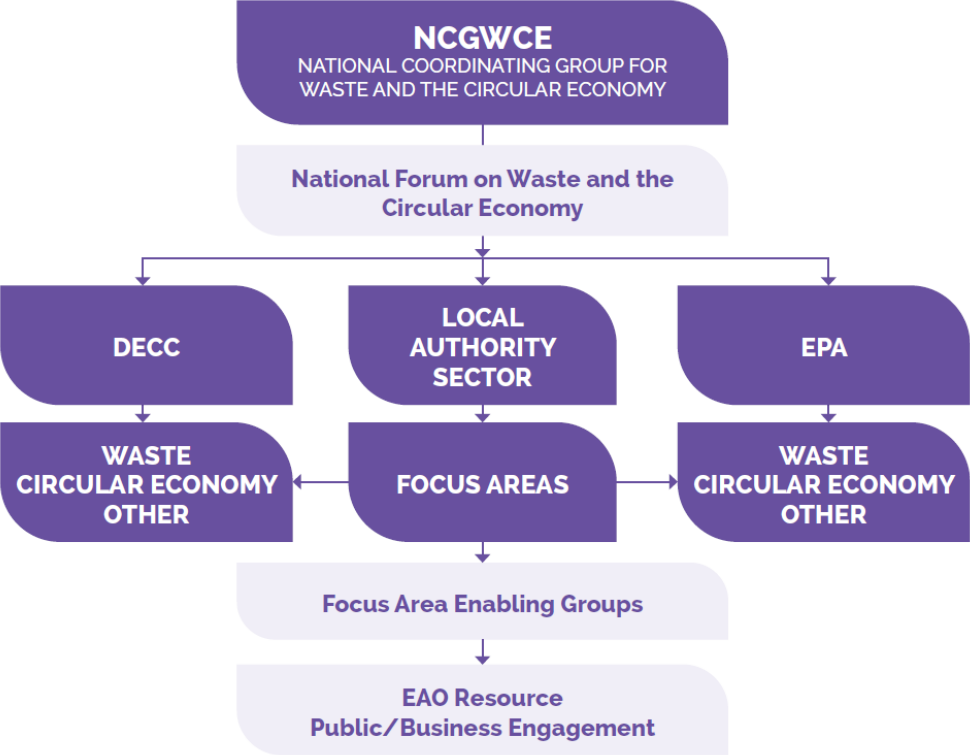
VIII

**Delivery
Roadmap**

**Impact
Organisation
Implementation**

KEY DELIVERABLE 25
National Coordinating Group for Waste and the Circular Economy

DECC, LAS and EPA will collectively establish the NCGWCE to agree and align work plans, priorities, and supports to maintain the continuity of activities and accelerate the transition to a circular economy.



- KEY DELIVERABLE 35**
 Communications Strategy - Implementation
- It is anticipated that an additional €1M will be required annually from government to implement the Circular Economy Communications
- KEY DELIVERABLE 36**
 Regional Circularity Resource
- The LAS will facilitate the provision of a regional circularity resource/s to coordinate the implementation
- KEY DELIVERABLE 37**
 Local Circularity Resources
- The LAS will facilitate the provision of local circularity resource/s to enhance circularity assessment
- KEY DELIVERABLE 38**
 Regulation
- Additional Investment in the NWCPO will be required from government to deliver incentivised charging for
- KEY DELIVERABLE 39**
 Public Investment
- The LAS is committed to facilitating reuse and circularity through the CA site network however significant support will be required from government to achieve this outcome.



THIS PLAN IN NUMBERS:

1

Plan
Ambition

6

National
Targets

13

Core
Policies

16

Focus
Areas

73

Targeted
Policies

83

Priority
Actions

51

Key
Deliverables

3 Next Steps – Overall Timeline

Timeline for Plan 2023



3 Next Steps - Consultation & Submissions

- Public Consultation (3rd May to 5th Jul) - Mywaste.ie
- Members Engagement
- Plenary Presentation 15th May, 15th Jun
- SPC 4 Engagement



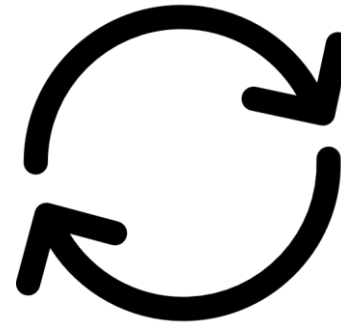
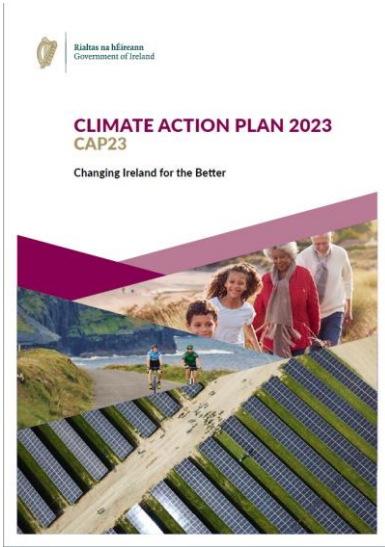


4 Alignment with Climate Change

“Climate and the circular economy are inherently interlinked with potential significant emissions savings to be made through maximising the efficiency of material usage.”



4 Alignment Waste Management Plan And Climate Change



19. The Circular Economy and Other Emissions

Key Messages

State of Play

- The circular economy offers an alternative to today's linear ('take-make-waste') model of production and consumption. Ireland has a circularity rate of 1.8%, some way behind the EU average of 12.8%
- Ireland's material consumption is well above the EU average, indicating that there is scope for savings in greenhouse gas (GHG) emissions through maximising the efficiency of our material usage
- Other emissions arise from F-gases, waste and petroleum refinement; and accounted for 2.8% of Ireland's GHG emissions in 2021
- Emissions in this 'other' category have reduced 10% since 2018, and there is a 25% reduction target by 2025 and a 50% reduction target by 2030

Current and Future Action

- Implement the Waste Action Plan for a Circular Economy and the Whole-of-Government Circular Economy Strategy
- Priority areas for prevention planning are in plastics, food, construction and commercial waste
- Encourage recycling and reuse
- Reduce emissions from F-gases and from petroleum refinement

Expected Outcomes

- Savings in GHG emissions through maximising the efficiency of our material use

CORE POLICY 2

Climate Action

Support the delivery of the measures and actions prescribed in the Climate Action Plan to contribute to achieving the national climate targets.

5 Useful Links

- [Mywaste.ie Plan Documents & Submissions](#)
- [2023 Circularity Gap Report](#)
- [2023 National Climate Action Plan \(CAP23\)](#)
- [2022 EPA Circular Economy Programme](#)