

WATER

CONSERVATION FOR FARMS


The Councils of the
County and City of Kilkenny




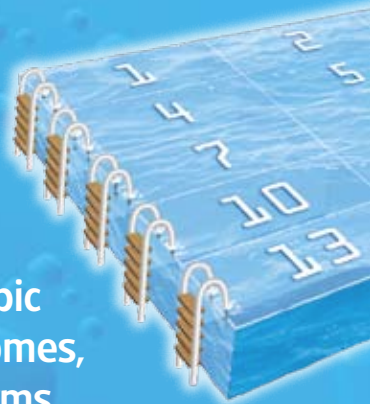
Kilkenny County Council
Comhairle Contae Chill Chainnigh




Kilkenny Borough Council
Bardas Buirge Chill Chainnigh




Kilkenny County Council collects, cleans and delivers 32 million litres of water a day (or 7 million gallons, which is equivalent to over 13 Olympic size swimming pools) to homes, schools, businesses and farms.



This leaflet shows you how to use water more effectively on farms. It is surprising, but with just a little more thought it is easy to reduce the amount of water used.

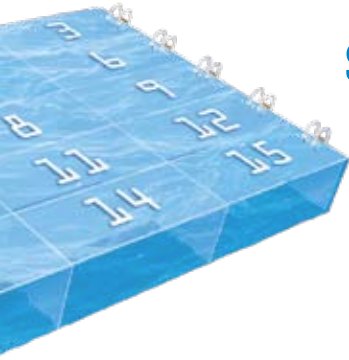


Your farm could benefit from introducing simple water saving measures which will not only help you to conserve water but reduce your water bill too.



Water conservation is a year round responsibility, and just as important during times of heavy rainfall as it is in drought.





Some Water Usage Facts



We each use on average 150 litres (33 gallons) of clean treated water every day.



A running tap can use up to 10 litres (2.2 gallons) of water a minute.



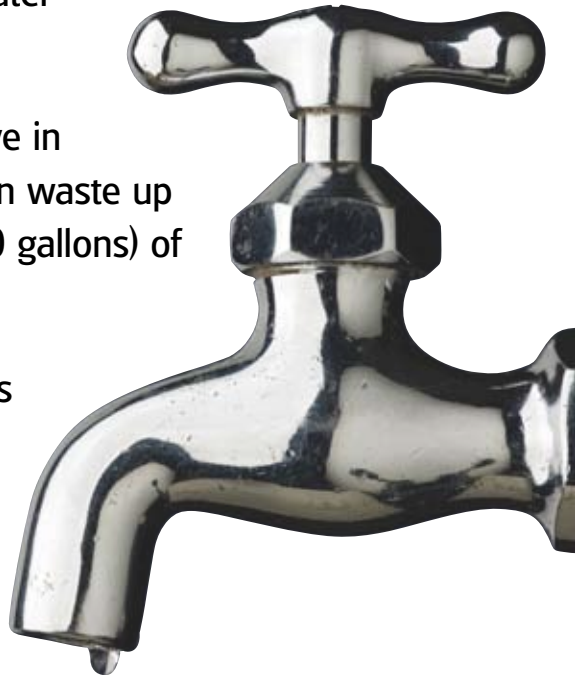
A dripping tap can waste up to 40 litres (8.8 gallons) of water a day.



A leaking ball-valve in a water trough can waste up to 150 m³ (33,000 gallons) of water per year.



A dishwasher uses between 10 and 40 litres (2.2 and 8.8 gallons) per cycle whether it's full or not.



Things that can waste water on your farm



Are any of the taps on the farm dripping or overflows running?

If yes, can the washers be replaced or overflow fixed?



Are taps and hosepipes left running when unattended?

If yes, consider fitting automatic shut-off valves.

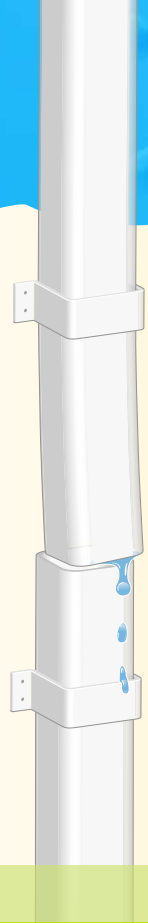


Are the water pipes properly covered to prevent them freezing in cold weather?

What could happen if they are not?



Are water troughs overflowing or ball-valves damaged?



Broken Ball Valve

Before




After



If yes, can ball-valves be adjusted so that there is less risk of spillage and overflowing?

Can troughs be drained when not in use during the winter to reduce frost damage?

Does your farm have a water leak?

 Find out where your water meter is. Normally your meter is located close to the property boundary in a chamber with the stopcock. If you have difficulty locating your meter, Kilkenny County Council will be able to assist.

Note: It is the consumers responsibility for maintenance and prevention of wastage from the meter.

Read your meter as work finishes at night – enter the reading.

A

--	--	--	--	--	--	--	--	--

Read it before work starts in the morning – enter the reading.

B

--	--	--	--	--	--	--	--	--

How much was used overnight? (B minus A)

B-A

--	--	--	--	--	--	--	--	--

If there is a large difference, there may be a leaking pipe.

Checking for leaks



There are two simple ways to **check for leaks...**

1. Visual checks



Check the ground above your pipes to look for visible signs of a leak, such as unusually damp ground.

2. Use your water meter

If you have a water meter you can use it to check for leaks.

Turn off all taps and appliances which use water, then check the meter. If the counter is turning, you may have a leak.

But make sure everything is turned off.

It's a good idea to take a meter reading every week or so.

If you're using more water...

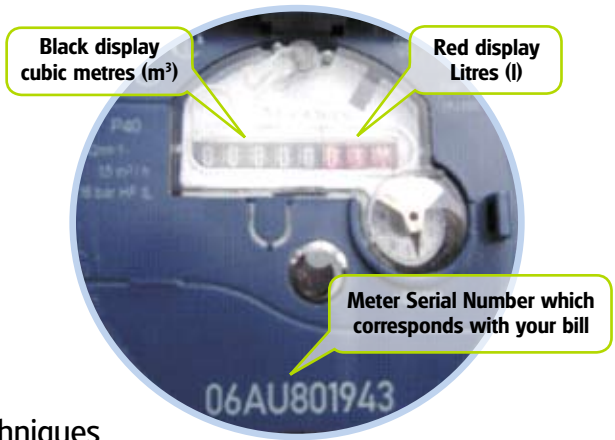
 ***has a tap started dripping?***

 ***is an overflow running?***

 ***or is it a leak?***

Reading your water meter

1 cubic metre [m³]
=
1000 litres
or
220 gallons



Water saving Tips

- Use dry-cleaning techniques when washing and cleaning, such as scrapers, squeegees and brushes to remove solid waste from yards and pens before they are cleaned with water.
- If it takes a lot of water and effort to clean your parlour after milking, use a small amount of water (a bucket or so) to lightly wet the parlour first. This will make the muck stick less, reducing the amount of water that you will need.

Alternative sources of water... Rainwater

- Rain collected from the roofs of farm buildings can be re-used for a variety of activities, including washing down yards. How much rainwater you can use depends on annual rainfall and the size, slope and material that your roof is made from.
- How much you can store depends upon the space that you have for storage and the demand that you have for the water.



Water Conservation Project & Network Management

Water Services Section
Kilkenny County Council

Tel: 056 7794000

E-mail: waterconservation@kilkennycoco.ie

The Councils of the County and City of Kilkenny



Kilkenny County Council
Comhairle Contae Chill Chainnigh



Kilkenny Borough Council
Bardas Buirge Chill Chainnigh